

A close-up photograph of a Trimble surveying instrument mounted on a tripod. The instrument is silver and black, with a lens and a small screen. The tripod has yellow and black legs. The background is a blurred view of a body of water and a bridge structure. The image is framed by a green and black geometric border.

# 2SURVEY

## CAPABILITY STATEMENT

Phone: +61 413 647 489 | Email: [contact@2survey.com.au](mailto:contact@2survey.com.au) | [www.2survey.com.au](http://www.2survey.com.au)





# COMPANY OVERVIEW

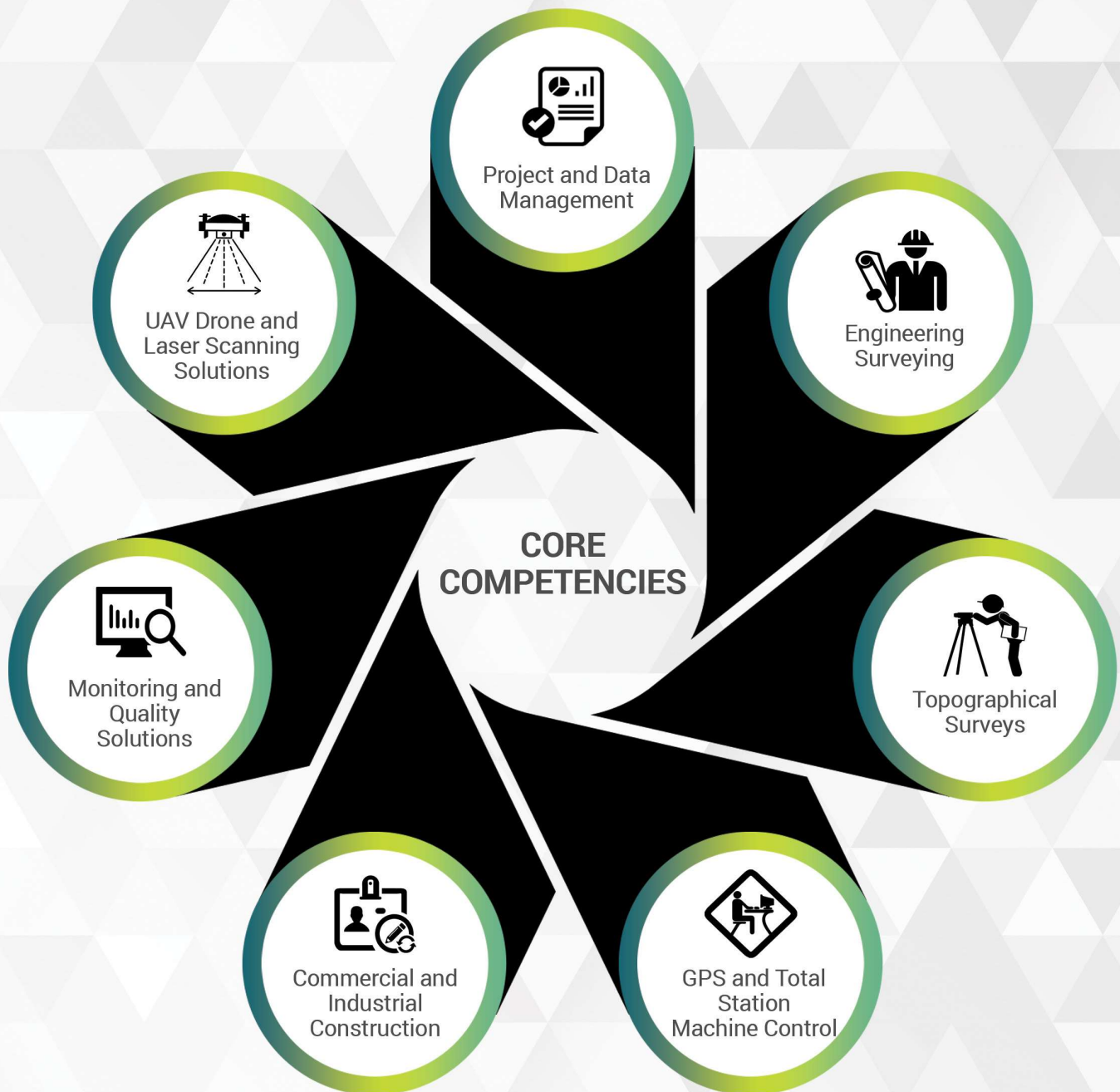
Established in 2016, 2Survey is a dynamic and results driven Engineering Surveying company.

Our team is dedicated to achieving high level client outcomes with expertise, technology, and innovation.

Our performance driven approach, delivers our clients the service they require, with professionalism and value for money.

**2Survey services all mainland states of Australia on local and remote projects.**

# CORE COMPETENCIES





# WHAT MAKES US DIFFERENT?

## INNOVATION

We utilise the latest technology to service all projects, large or small. We continuously develop innovative solutions to add value to our clients' needs by starting with the end result front of mind.

## FLEXIBILITY

We have the resources to proactively respond to the varying scope of projects. Our team comprises adaptable, highly skilled and qualified professionals.

## VALUE

We provide a complete tailored solution from conception to completion to streamline your project and save time, money and risk.

## HEALTH, SAFETY AND THE ENVIRONMENT

The Work Health and Safety Policy of '2 Survey Pty Ltd' endeavors to protect the health and safety of its employees, customers and others, who may be affected by our business activities. Our primary concern is the health and safety of all our employees and others.

**2Survey are very proud to report a zero LTI (Lost Time Injury) to date.**

# EQUIPMENT CURRENTLY IN OPERATION

We have added the latest in drone technology to our fleet, providing clients the ability to measure, analyse and photograph their projects. This enables clients to discover potential site issues, build a visual record of construction record progress and to track volumes and enhance productivity.

Our latest addition - a cutting-edge mobile laser scanner! This advanced technology redefines efficiency and precision, taking our capabilities to the next level.

## What Can It Do?

Capture precise building data for seamless modelling. transform facilities into detailed digital twins, accurate underground mapping made easy, revolutionizing environmental assessments, preserve history with detailed digital replicas, and no task too big or too complex!

2Survey utilizes Robotic Total Station (RTS), Global Navigation Satellite System (GNSS) and digital levelling survey equipment to perform cadastral surveys in accordance with the approved guidelines and regulations in each State of Australia.



# SOFTWARE USED



# FEATURED CLIENTS





## OUR PROJECTS

- WPA – Cherry Street Werribee Level Crossing Removal (McConnell Dowell)
- Bell Street to Moreland Road Sky Rail, Occupation Works (John Holland)
- Western Roads Upgrade OSARS Derrimut Road (WBHO)
- Epping Development Cooper Street and O Hearn's Road (BMD)
- Ison Road Bridge (Lendlease Communities / Bridgecon)
- Monash Freeway – Various Structures and Pavement Survey (Fulton Hogan)
- Webdock – Patrick Autocare (Georgiou)
- William Street Tram Works (Fulton Hogan)
- Toorak Rd Tram Works (Fulton Hogan)
- Boundary Road (BMD) Industrial Development
- Western Roads Upgrade Pavement Remediation – Elite Roads / Ventia
- WPA - Mt Derrimut Road level Crossing Removal (McConnell Dowell)
- Western Treatment Plant (BMD / Melbourne Water)
- Hall Road West MRPV (BMD)
- Waurn Ponds St 2 - Djilang Alliance (Downer/ MCD)
- Narre Warren Road North MRPV - Symal



# OUR WORKS



**Hope Island Station Upgrade in Queensland**, delivering high-end engineering surveying services with precision!

Using Leica's state-of-the-art survey equipment and 12d Model software, we're providing our clients with the most accurate and actionable survey data for every stage of this critical infrastructure project.

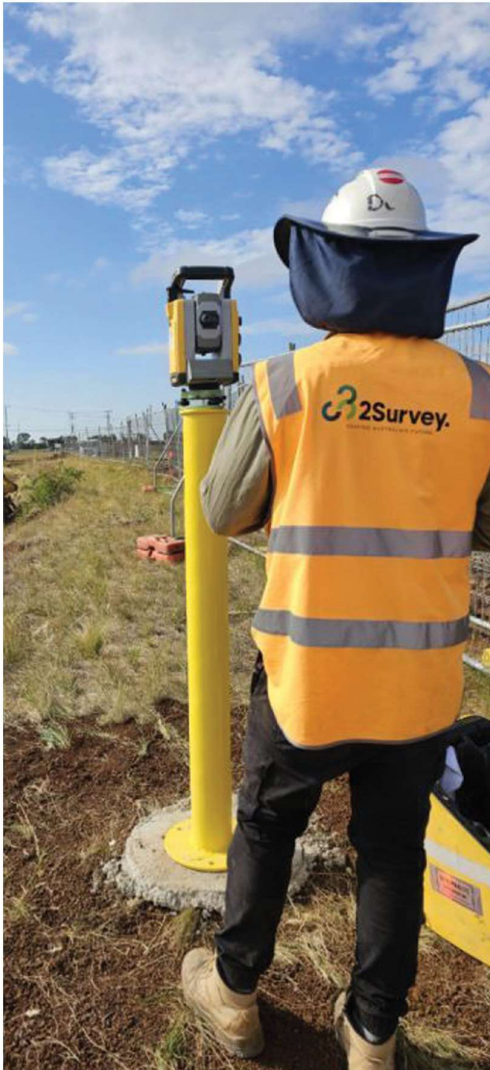
With our advanced tools and technology, we're able to support construction and design teams through precise measurements, seamless data integration, and efficient workflows. Our team is committed to achieving quality results that elevate the standard for surveying in infrastructure projects.

**Precision & Progress:** Combining Leica hardware and 12d software to deliver precise measurements and robust data insights.

**Community Impact:** Supporting the growth of safer, accessible transit for the Gold Coast.

**Proud to contribute to Queensland's infrastructure landscape with solutions that move us forward.**

# OUR WORKS



## Control Network Traverse & Adjustment

A recent control network traverse and adjustment on a new project 2Survey Pty Ltd achieved millimetre-level accuracy.

At 2Survey Pty Ltd, precision is at the core of everything we do. Leveraging the powerful features of 12d Model, our team applied cutting-edge tools for network adjustment and data analysis, ensuring the highest standards in surveying accuracy. From initial setup to final adjustments, we utilized 12d's robust functionalities for control point refinement and data integrity, setting a strong foundation for the project.



# OUR WORKS



## **South Geelong to Waurin Ponds Duplication Project:**

Enhancing Infrastructure with Engineering Surveying. 2Survey Pty Ltd are excited to share insights from this key project improving Victoria's transportation. We're duplicating rail lines to meet growing passenger and freight demands.





**2Survey Pty Ltd**

**P: +61 413 647 489**

**E: [contact@2survey.com.au](mailto:contact@2survey.com.au)**

**W: [www.2survey.com.au](http://www.2survey.com.au)**

**P.O. Box 2128, Moorabbin, Vic 3189**

**Professional References Available on Request**